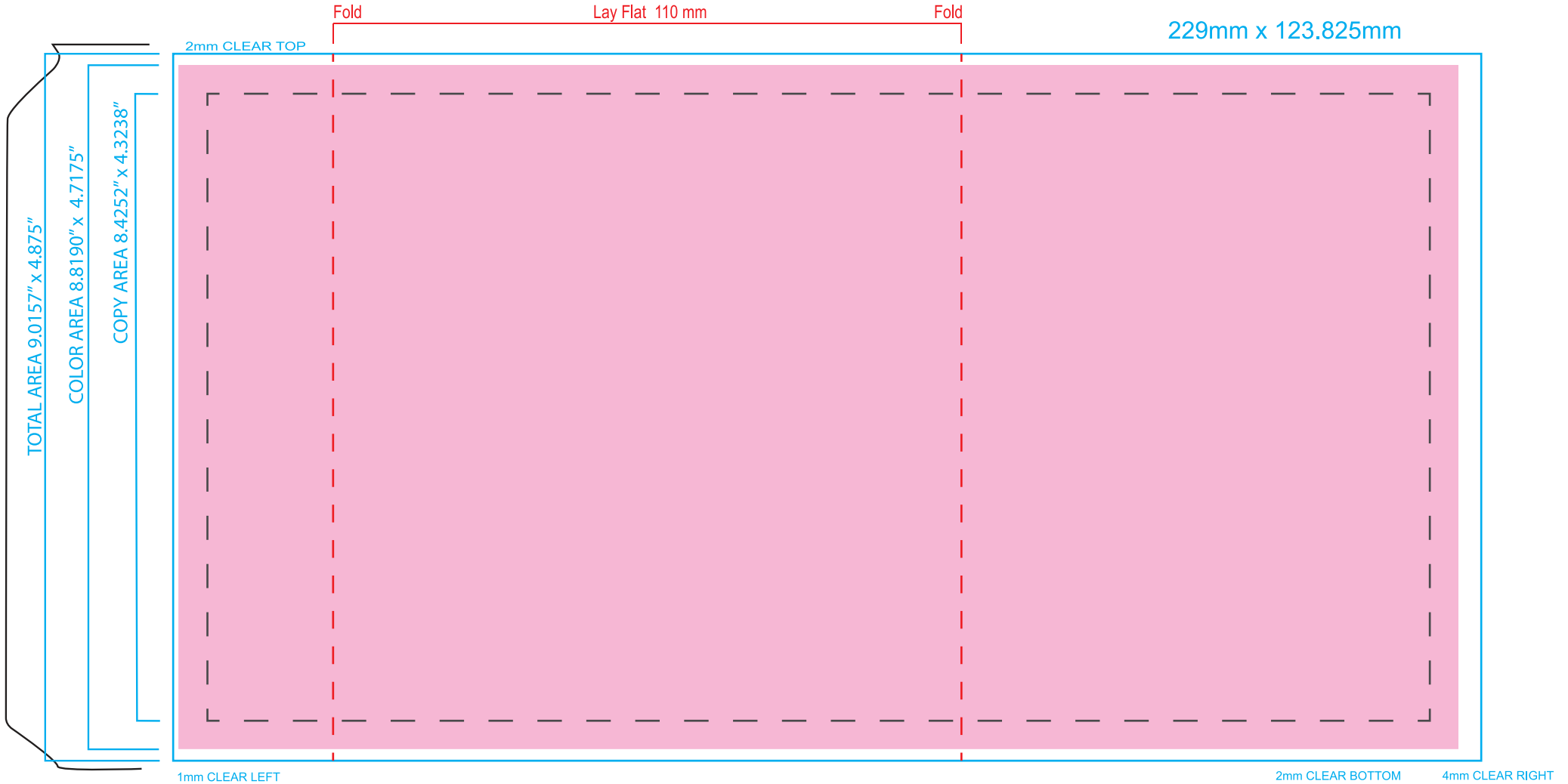






12 oz Standard Can Shrink Sleeve

9.0157 x 4.875"

- STEPS TO SUCCESS WITH SHRINK:**
- Make sure all critical text and artwork stays within the Copy Border
 - Save file as .ai or .pdf (pdf should be at least Acrobat 7 compatibility, Preserve Illustrator Editing Capabilities and Acrobat Layers from Top-Level Layers)
 - Outline all fonts
 - Embed images (at least 300 dpi)
 - White and varnish set to Overprint Fill
 - File colors are CMYK + PMS (no RGB images or elements)
 - Provide LGI with your UPC number and barcode type and we will make the barcode
- or
- Customer provided barcodes should meet UPC code specifications outlined by GS1



			
Layflat Folds	Copy Border	Dieline	White
(no critical copy outside)			